



Training session for replicating organizations

Trieste, 26/11/2018

An introduction to SEAPs and SECAPs



AREA SCIENCE PARK
Stefano Alessandrini



SIMPLA project has received funding from the European Union's Horizon 2020 research and innovation programme under grant agreement No 695955

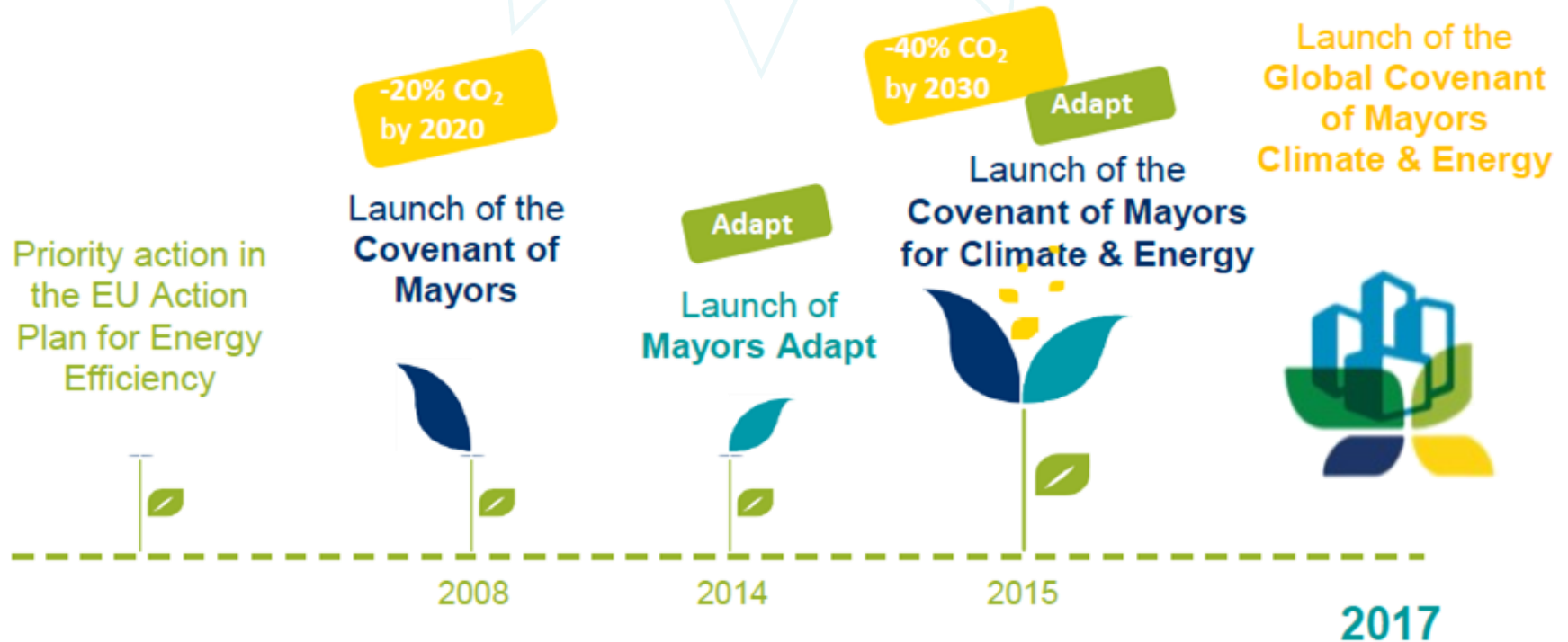
The content of this presentation reflects only the author's view and the Executive Agency for Small and Medium-sized Enterprises (EASME) is not responsible for any use that may be made of the information it contains.

SUMMARY

- FROM SEAP TO SECAP
- WHAT IS A SECAP
- SECAP MAIN SECTIONS
- SECAP KEY SECTORS
- CONCLUSIONS

FROM SEAP TO SECAP

The evolution of the Covenant of Mayors



FROM SEAP TO SECAP

The 3 pillars of the Covenant of Mayors in Europe

MITIGATION

Accelerating the decarbonisation of their territories

ADAPTATION

Strengthening their capacity to adapt to unavoidable climate change impact

ENERGY

Allowing their citizens to access secure, sustainable and affordable energy

'-40% by 2030' + 'more resilient cities' + 'address Energy Poverty'

WHAT IS A SECAP

- Signatories of the Covenant of Mayors for Climate and Energy have committed to prepare and implement a Sustainable Energy and Climate Action Plan (SECAP) before 2030
- From October 2015 only SECAP's are allowed

WHAT IS A SECAP

SECAP includes:

- an assessment of the geographical, demographical and energy local context,
- a baseline CO2 Emission Inventory (BEI)
- a clear identification of the emissions reduction target
- the actions planned together with time frames, assigned responsibilities

WHAT IS A SECAP

Thus the SECAP retains the same outline procedure used for SEAPs but differs in:

- **Target:** - 40% of CO₂ emissions;
- **Timeframe:** a SECAP is expected to achieve the objective of 40% reduction by the year 2030;
- **Development time:** a SECAP has to be submitted within two years of joining the Covenant.

Guidelines on how to develop a SEAP are available at:

http://www.simpla-Project.eu/media/32996/seap_guidelines_en-2.pdf

WHAT IS A SECAP

- risk and vulnerability assessment of the effects of climate change
- determine the nature and extent of risk
- assessing vulnerability that could pose a potential threat or harm to:
 - ✓ People
 - ✓ Property
 - ✓ Livelihoods
 - ✓ Environment on which they depend.

Adaptation strategies, to improve territories resilience

The Urban Adaptation Support Tool (Urban-AST) provides guidelines on how to develop an adaptation plan. The tool is available at:

<http://climate-adapt.eea.europa.eu/knowledge/tools/urban-ast>

WHAT IS A SECAP

- “Mitigation” and “Adaptation”
- SEAP guidelines, and the Urban-Adaptation Support Tool (Urban-AST) respectively.
- The plans have to be approved and adopted by the Covenant signatories’ city councils and then submitted to the Covenant of Mayors Office (CoMO) for a review process which ends with the acceptance of the plan
- the implementation of the plan has to be monitored every two years, following the monitoring guidelines available at the CoMO website (www.covenantofmayors.eu) .

SECAP MAIN SECTIONS

1

- VISION

2

- CONTEXT ANALYSIS

3

- BEI/MEI

4

- CO₂ EMISSION REDUCTION OBJECTIVES

5

- MITIGATION ACTIONS

6

- RISK AND VULNERABILITY ASSESSEMENT

7

- ADAPTATION ACTIONS

SECAP KEY INTERVENTION SECTORS

- **M**unicipal buildings, equipment and facilities
- **T**ertiary (non-municipal) buildings, equipment and facilities
- **R**esidential buildings
- **T**ransport



Buildings



Transport



Energy



Water



Land use
planning



Agriculture
& forestry



Environment &
Biodiversity



Health



Civil protection
& Emergency



Waste



Tourism

CONCLUSIONS

10 REASONS TO JOIN THE COVENANT OF MAYORS FOR CLIMATE AND ENERGY



1. Gain high international recognition and visibility
2. Contribute to shaping the EU's climate and energy policy
3. Strengthen the credibility of your commitments
4. Secure long-term support for your climate and energy actions
5. Boost access to financing
6. Participate in networking events, capacity building sessions and discussions
7. Receive tailored guidance
8. Enjoy easy access to 'excellence know-how'
9. Benefit from facilitated self assessment and benchmarking
10. Get connected to national and sub-national authorities





Contact

STEFANO ALESSANDRINI

stefano.alessandrini@areasciencepark.it

+39 040 375 5296

www.simpla-project.eu



SIMPLA project has received funding from the European Union's Horizon 2020 research and innovation programme under grant agreement No 695955

The content of this presentation reflects only the author's view and the Executive Agency for Small and Medium-sized Enterprises (EASME) is not responsible for any use that may be made of the information it contains.